

# 315KW GENERATOR

## DESCRIPTION

**NEVER USED, NEVER ASSEMBLED**—This 315KW Generator is manufactured by SDMO was designed and manufactured to operate in a dusty and corrosive environment

This system includes the following main features:

- Volvo Diesel Engine, Model TAD941GE
- Sound-Proofing Enclosure, 80 dBA @ 1 m
- IP55 Protection
- Engine Coolant Pre-Heating System
- Oil Lubrication System with Filter
- Leroy Somer Alternator, Type LSA 47.2 S4
- Fuel Tank Capacity: 700 Liters
- Control Panel with HMI
- MODUS Communication Protocol
- 3P-CB-400A Circuit Breaker Protection



ID	17-AR04
MODEL #	V350C2
SN	D9A2A*7009190835
DATE MFG.	2013
SOFTWARE ID	VP-207524
	<b>FEATURES</b>
CONDITION	Unused
KVA	315
VOLTAGE	690
FREQUENCY	50 Hz
RPM	1500
PHASE	3
FUEL CONSUMPTION	67 L/H @ Prime Power
LUBE OIL CONSUMPTION	0.05 L/H



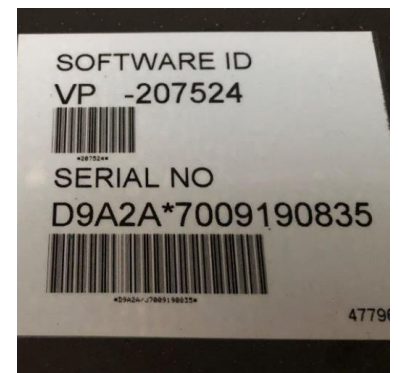
**YOU MINE. WE SELL.**

+1 (530) 534-7965  
[info@amking.com](mailto:info@amking.com)

Pre-Owned Mining, Processing & Construction Equipment Since 1979i

# 315KW GENERATOR

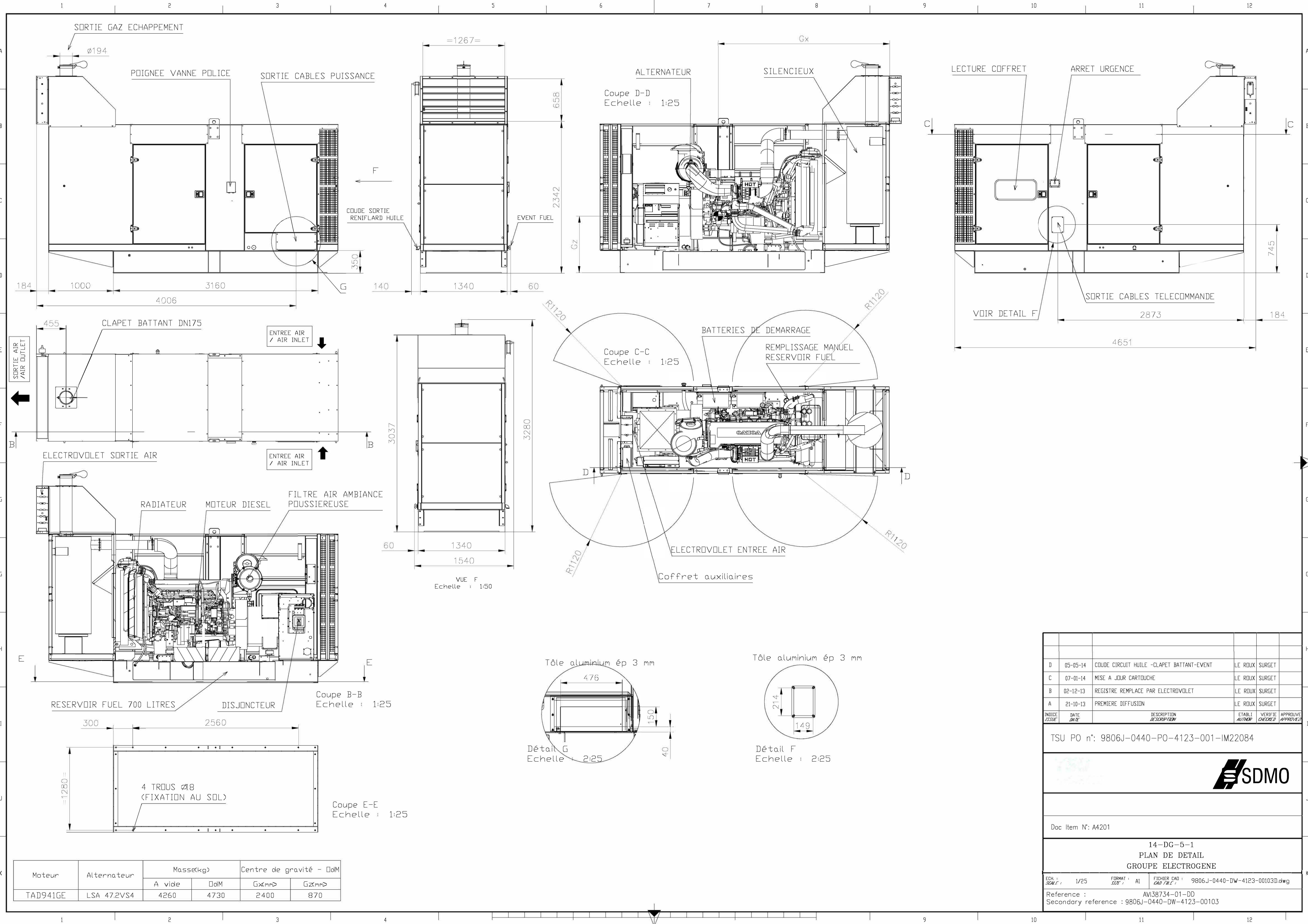
## PICTURES



**YOU MINE. WE SELL.**

+1 (530) 534-7965  
info@amking.com

Pre-Owned Mining, Processing & Construction Equipment Since 1979i



INDICE / INDEX	DATE / DATE	DESCRIPTION / DESCRIPTION	ETABLI / AUTHOR	VERIFIE / CHECKED	APPROUVE / APPROVED
D	05-05-14	COUDE CIRCUIT HUILE -CLAPET BATTANT-EVENT	LE ROUX	SURGET	
C	07-01-14	MISE A JOUR CARTOUCHE	LE ROUX	SURGET	
B	02-12-13	REGISTRE REMPLACE PAR ELECTROVOILET	LE ROUX	SURGET	
A	21-10-13	PREMIERE DIFFUSION	LE ROUX	SURGET	

TSU PO n°: 9806J-0440-PO-4123-001-IM22084

**SDMO**

Doc Item N°: A4201

14-DG-5-1  
PLAN DE DETAIL  
GROUPE ELECTROGENE

ECH. / SCALE: 1/25    FORMAT: AI    FICHER CAD / CAD FILE: 9806J-0440-DW-4123-00103D.dwg

Reference: AVI38734-01-DD  
Secondary reference: 9806J-0440-DW-4123-00103

Moteur	Alternateur	Masse(kg)		Centre de gravité - ØM	
		A vide	ØM	Gxmm	Gzmm
TAD941GE	LSA 47.2VS4	4260	4730	2400	870